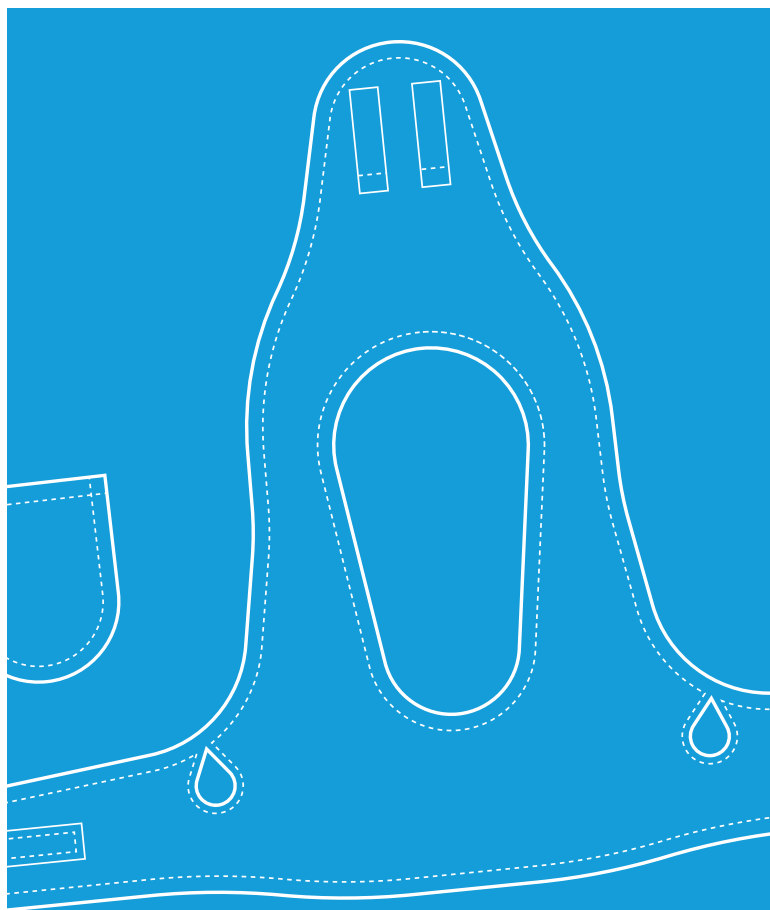


tookie

#ALifeMoreNormal



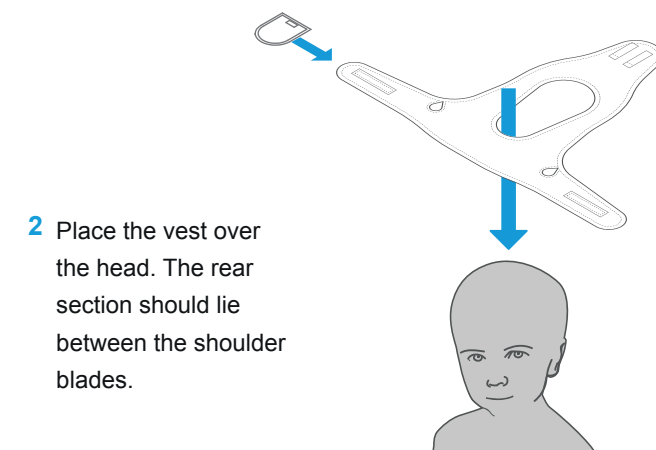
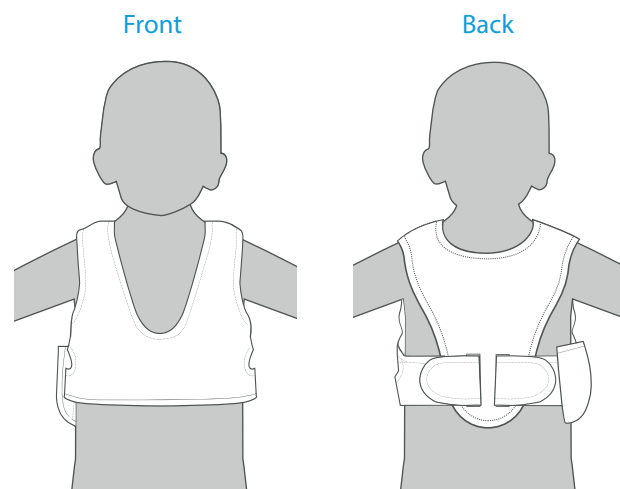
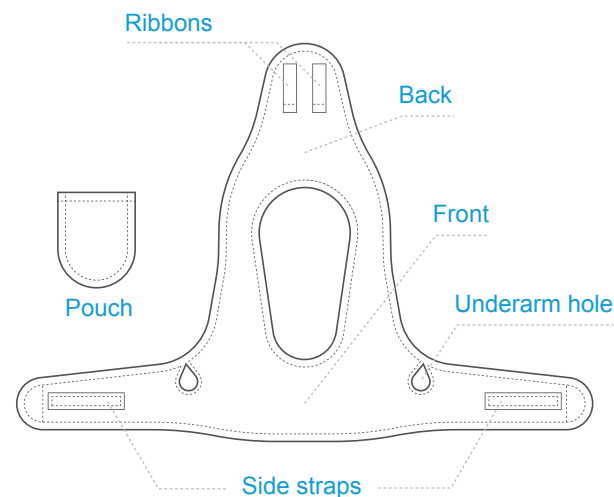
The Tookie® vest for Oncology (Child)

CE GB Patent No. 2531144
EU Reg. Des. 002990382

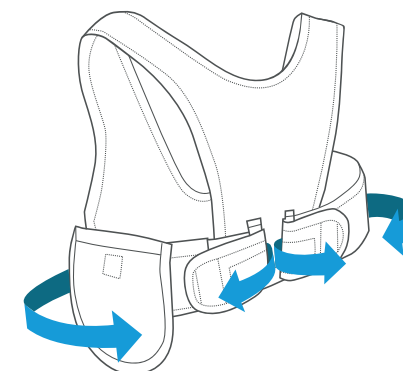
GMDN 62240

Instructions for Use

- 1 The vest is worn by opening the straps and laying it out flat, the side with the Velcro and ribbons facing upwards. The vest has a detachable pouch which can be worn on either side strap.

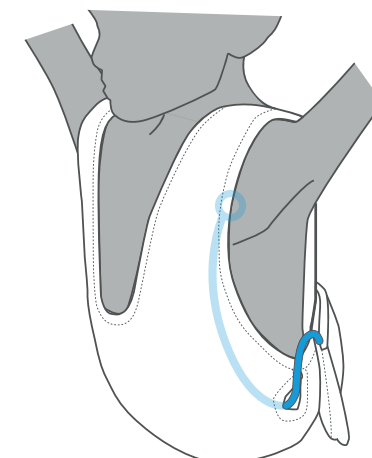


- 2 Place the vest over the head. The rear section should lie between the shoulder blades.



- 3 Feed the central line through the underarm hole. The straps are passed under the ribbons, folded back and secured using the Velcro. The vest should be snug but not too tight.

- 4 The central line should be gently looped and placed in the pouch. Ensure the line is kept as close to the body as possible. There is a Velcro fastener inside the pouch for additional security.





Tookie® Ltd,
Unit 18,
Tower Street,
Brunswick Business Park, Liverpool.
Merseyside.
L3 4BJ.
UK

@tookieco

www.tookie.co

Continuous Improvement

Tookie® Ltd is committed to continuous improvement of our service and products.

Please contact us through our website www.tookie.co with any feedback. Your feedback would be most welcome and will help us develop our product for future uses.

12 / 2017

Purpose of The Tookie® Vest

The intended purpose of the Tookie Vest for Oncology is to capture and protect the central line catheter.

Washing Instructions

The vest should be washed after a day's use or sooner should it become soiled.

Prior to washing, the pouch should be placed on the vest side strap and the vests' Velcro fastening secured. This will prevent loss of the pouch and anything being caught in the Velcro.



Wash up to
60°C



The washing
machine
should not be
overloaded



Do not use
bleach



Air dry or
tumble dry on
a low heat



Do not iron

Environmental Awareness

Please dispose of your vest in a responsible manner.

Size Chart

The vest is available in four sizes.

1 X Small	50-53cm	Approx. age 2
2 Small	54-59cm	Approx. age 3-5
3 Medium	60-65cm	Approx. age 6-7
4 Large	66-70cm	Approx. age 8-10

Guidance for Fitting

- The vest back fastening is designed to enable a snug fit.
- The quoted age ranges are for reference only.
- Please choose the most appropriate chest size for your child.
- The vest should fit snugly to the child's torso and the pouch placed in a position that ensures the line is captured as close to the chest exit site as possible.

Precautions

- The vest is for single patient use only.
- Do not use the vest directly on broken skin, always use a medical dressing.
- In the case of skin irritation or soreness stop using the vest and seek medical advice.
- Remove vest prior to receiving medical investigations or treatment to the chest.
- Keep away from naked flames.